

# South Essex CCG's PTS Eligibility Assessment February 2018 – FINAL

This daily living assessment should be used to assess **ALL** patients eligibility for patient transport services with the following exceptions. These patients are currently excluded from the eligibility assessment and transport should be arranged accordingly. Note this may be subject to change in the future.

Is the patient receiving transport for any of the following treatments?:

- Radiotherapy,
- Chemotherapy,
- Renal Dialysis,
- Inpatient: Acute inter hospital transfers or appointments
- Transfer to Nursing Home
- Admission to community bed
- Consultant approved Mental Health journeys

Yes

Please proceed with the booking process.

No

Is this an outpatient appointment /day case/admission/ Non Acute Inpatient Journey request

If yes; proceed to **section one**.

Is this a hospital discharge?

If yes; proceed to **section two**.

# PTS: Section One (outpatient/day case/admission)

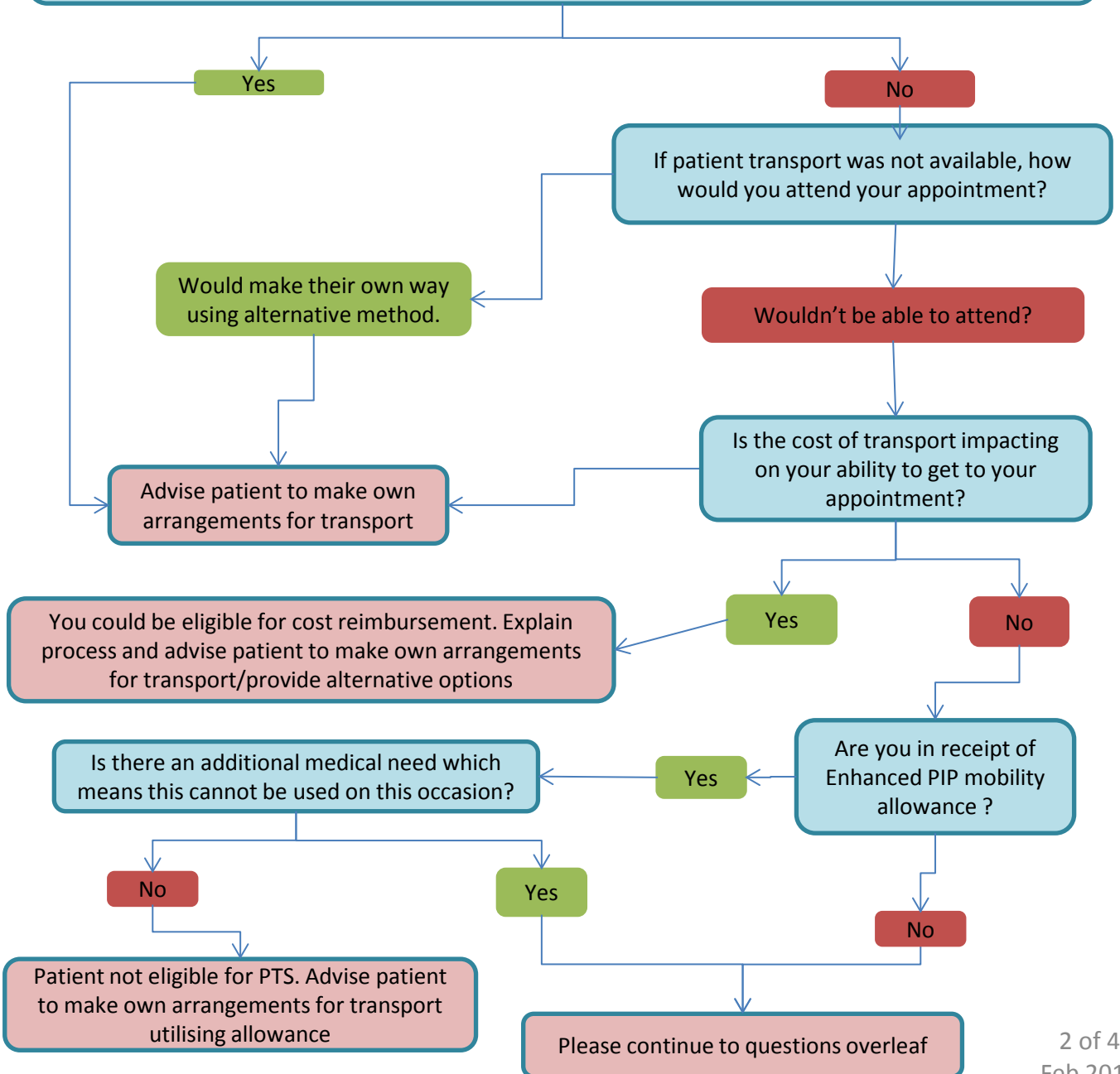
## Disclaimer:

We will now ask you a series of questions to assess whether you are eligible for PTS. You are expected to give honest responses to the questions asked. The responses will be recorded. We will regularly review patients to ensure they are still eligible for the service. If responses given are later found to be inaccurate, it may impact on your entitlement to use PTS.

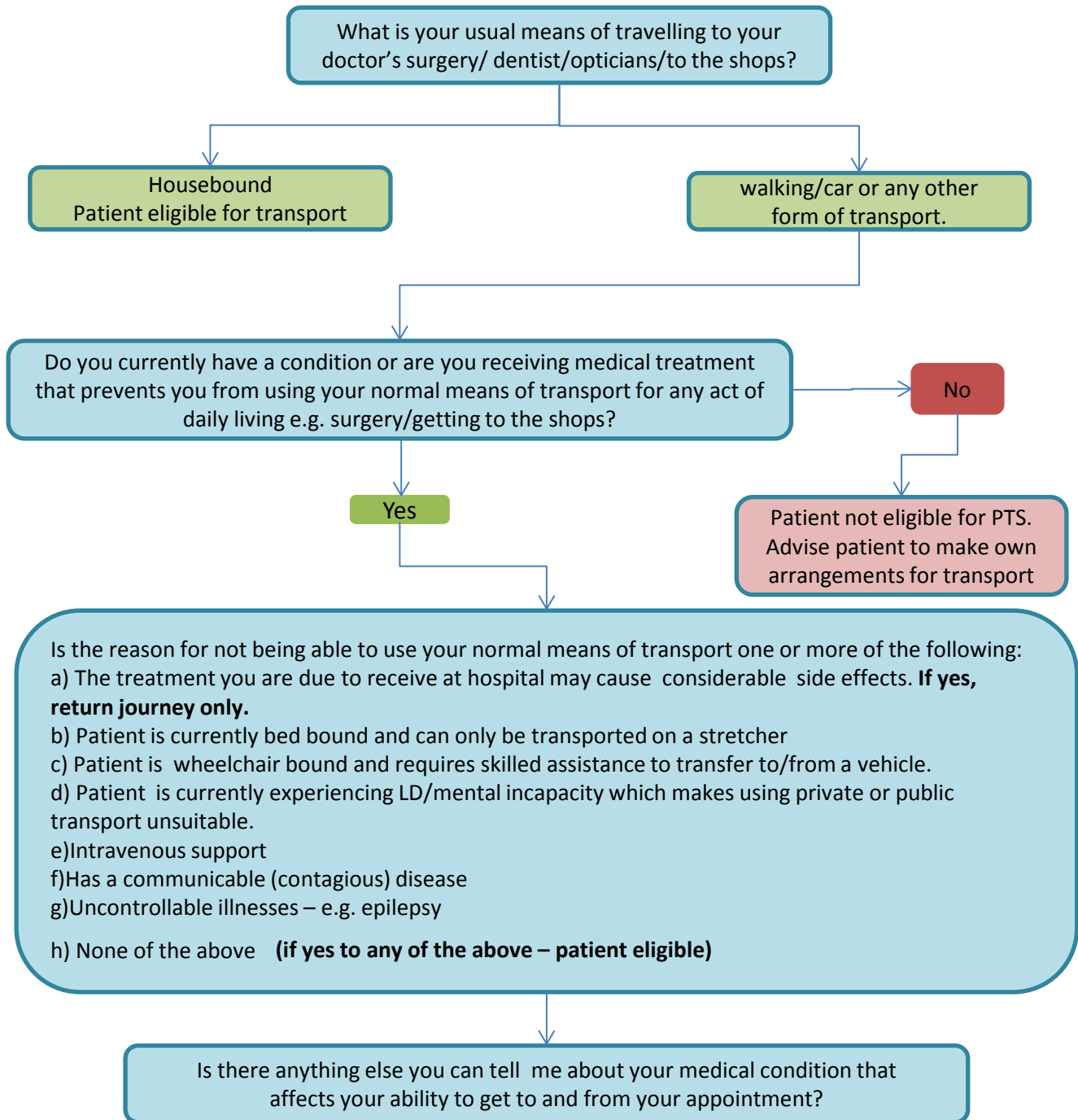
Do you understand the assessment process?

Are you happy to continue with the eligibility assessment?

Do you have any means of getting to the appointment yourself? e.g. use public transport/taxi  
Do you own or do you have access to a car that you could use?  
Do you have a friend/family member who could help you get to your appt?



## PTS: Section One (outpatient/day case/admission) CONTINUED



NOTE: If Patient not eligible alternative transport options to be provided

**NOTE TO PATIENT:** In the event appointments are cancelled or, appointment times change, patient transport must be advised to ensure your transport is available and to ensure this NHS resource is used effectively.

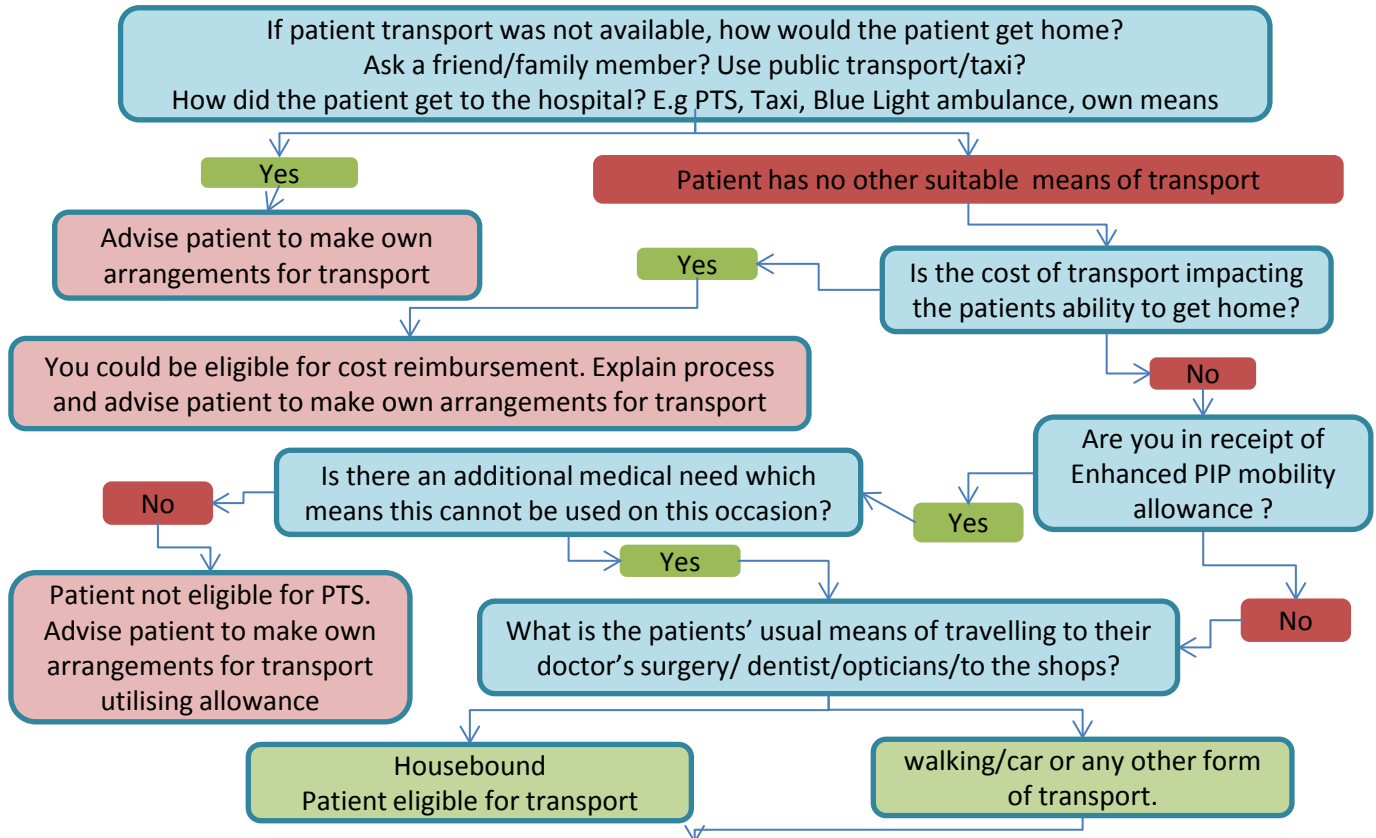
## PTS: Section Two (Discharges)

### Disclaimer:

You will now be asked a series of questions. Please ensure that you have discussed each question with the patient to ensure the information is as accurate as possible, to determine the appropriate outcome for the patient, including the patients mobility requirements  
Please do not attempt to book patients that do not meet the eligibility criteria, as this could prevent availability of vehicles for those with a genuine medical need.

Do you understand the assessment process?

Are you happy to continue with the eligibility assessment?



Is the reason for not being able to use your normal means of transport one or more of the following:

- Patient is currently bed bound and can only be transported on a stretcher
- Patient is wheelchair bound and require skilled assistance to transfer to/from a vehicle.
- Patient is currently experiencing LD/mental incapacity which makes using private or public transport unsuitable.
- Intravenous support
- Has a communicable (contagious) disease
- Uncontrollable illnesses – e.g. epilepsy
- None of the above (if yes to any of the above – patient eligible)

Is there anything else you can tell me about the patients medical condition that affects their ability to make their own way home?

**NOTE RE CANCELLATIONS:** In the event that transport is no longer required for this patient, transport must be advised to ensure the vehicle is released for another patient and to ensure NHS resource is used effectively.